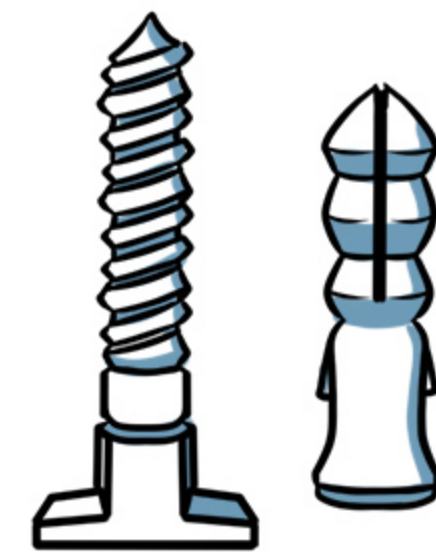
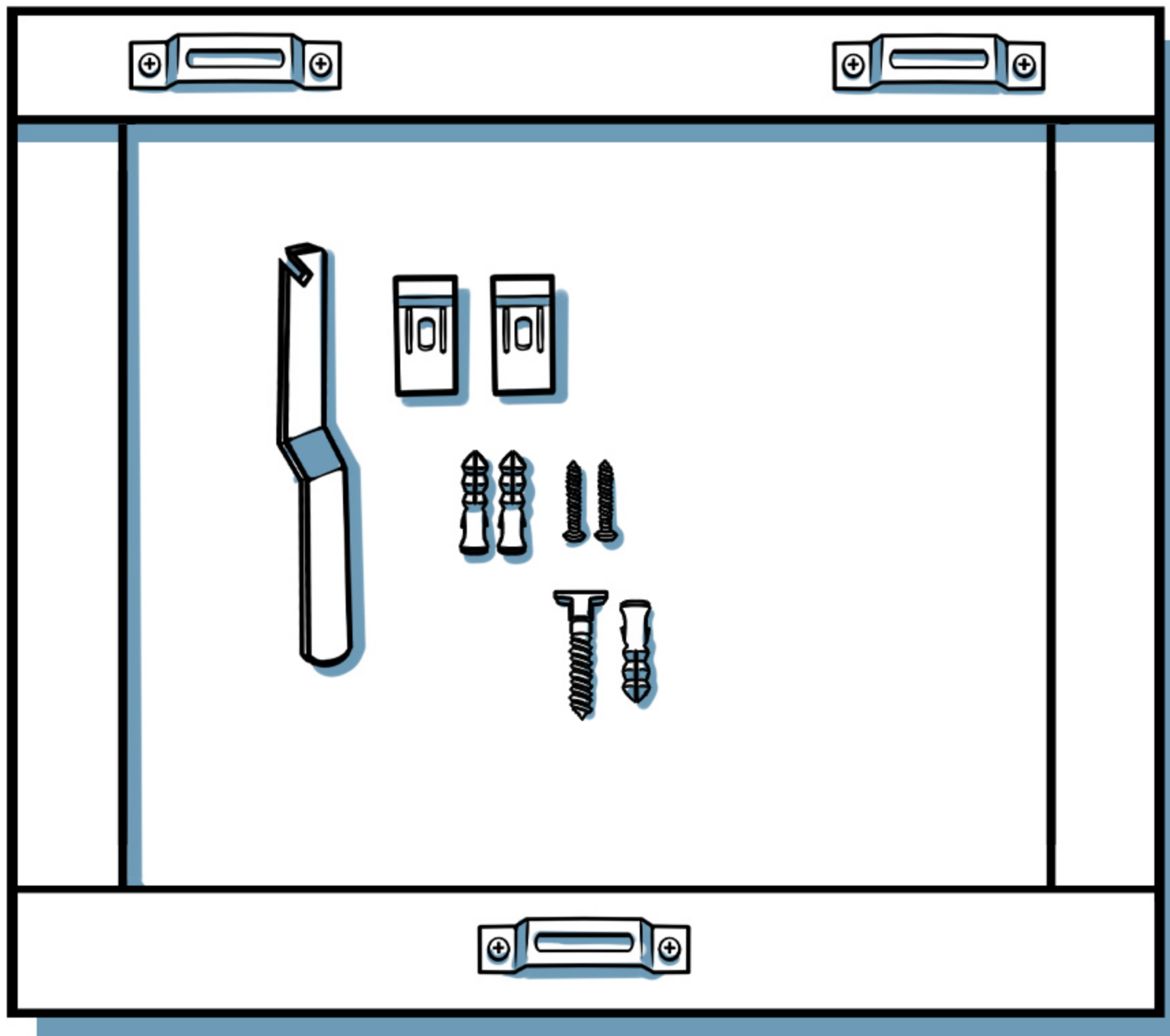


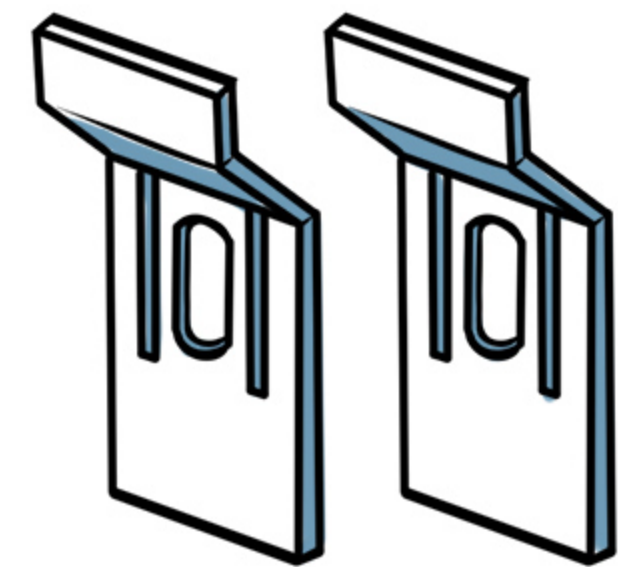
# 3-Point Security Hardware Installation

This hardware option is ideal for those seeking a secure option, especially in hospitality, retail, or corporate settings.

## Hardware Inputs



T-screw



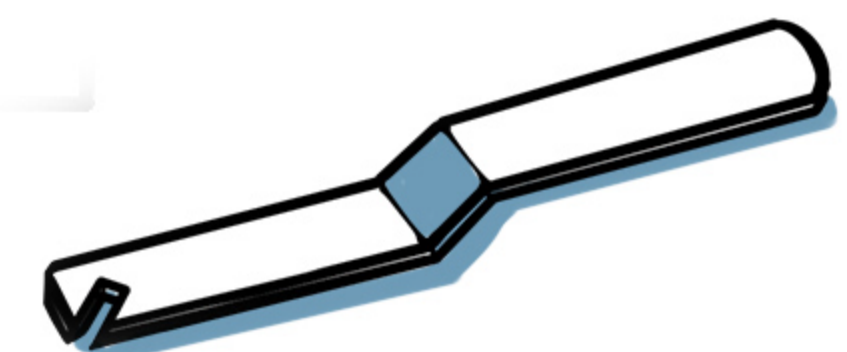
Bracket



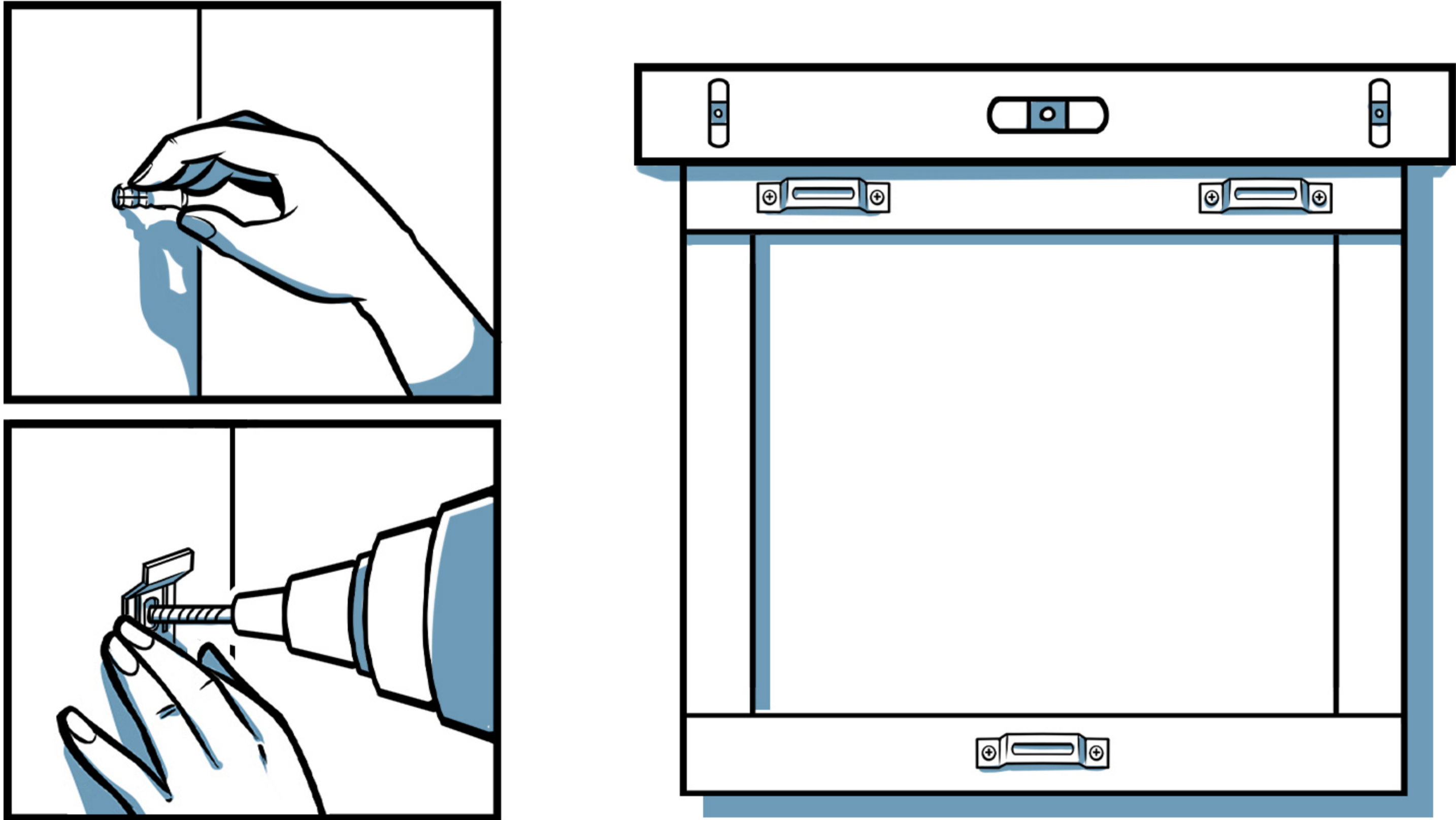
Metal Plate

## Things You Need:

- **3-point Security Hardware Kit (Provided)**  
*Note: The print will already come with the plates installed for your convenience.*
- **Drill**
- **Measuring Tape**
- **Level**



T-screw Wrench

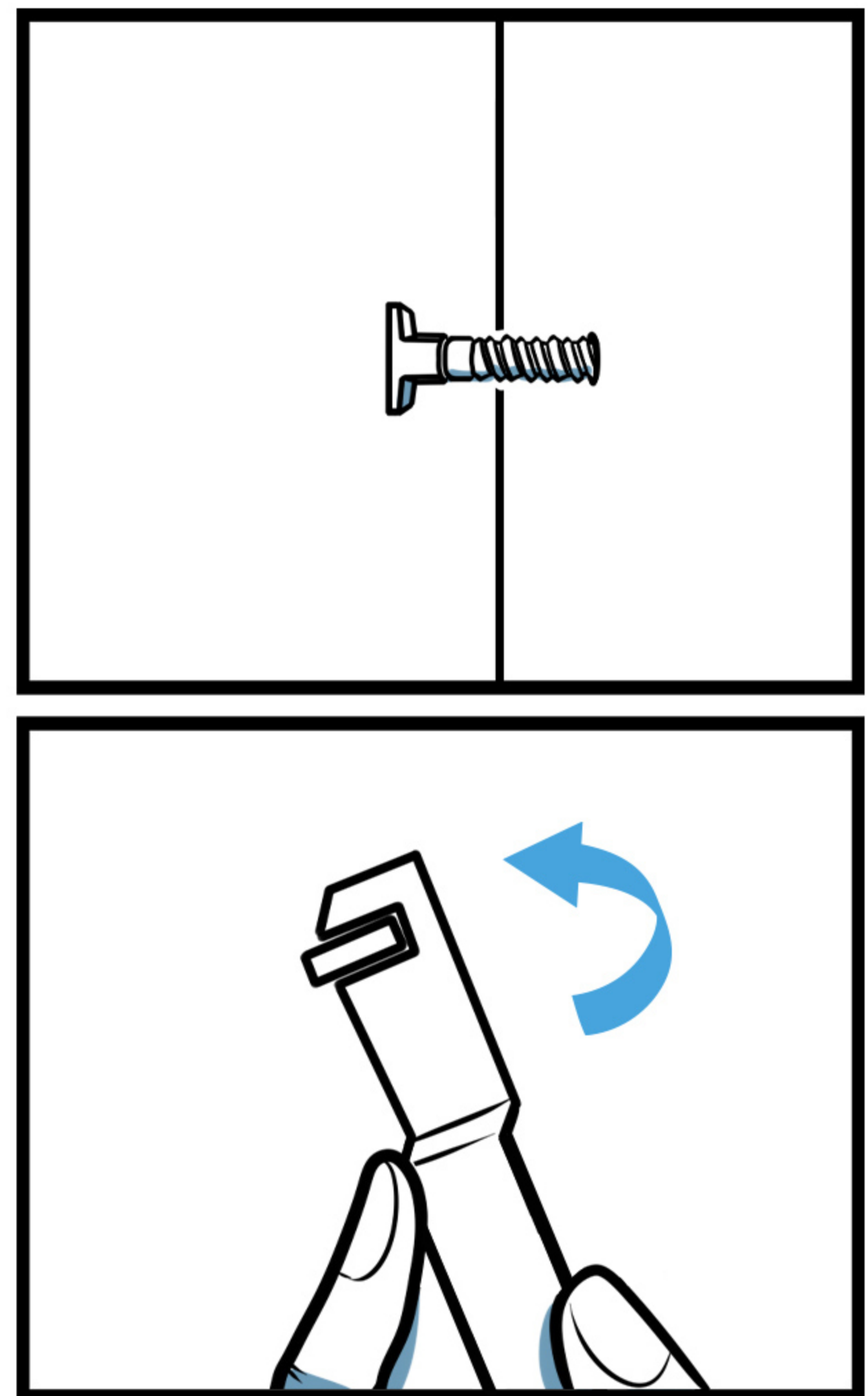
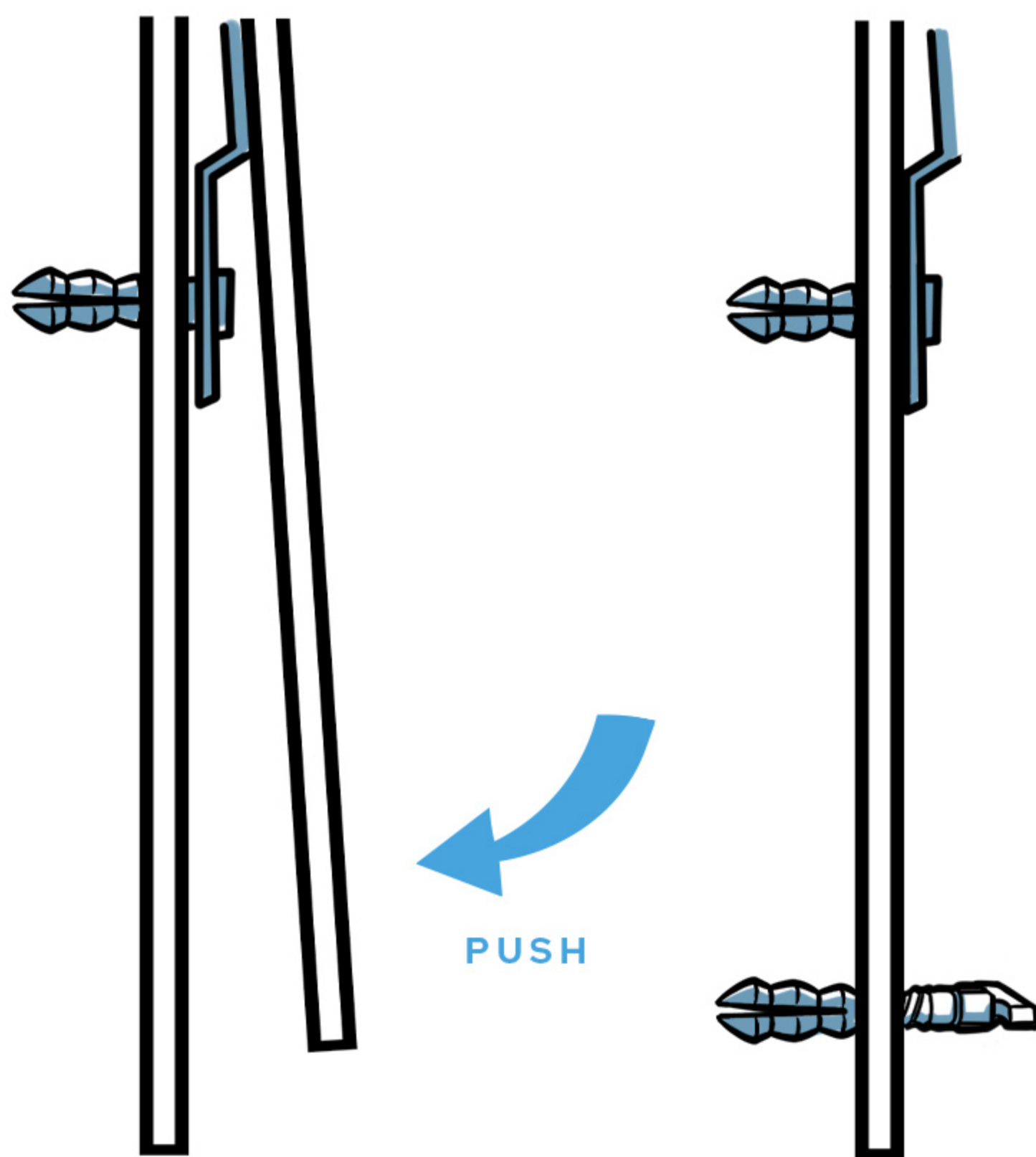


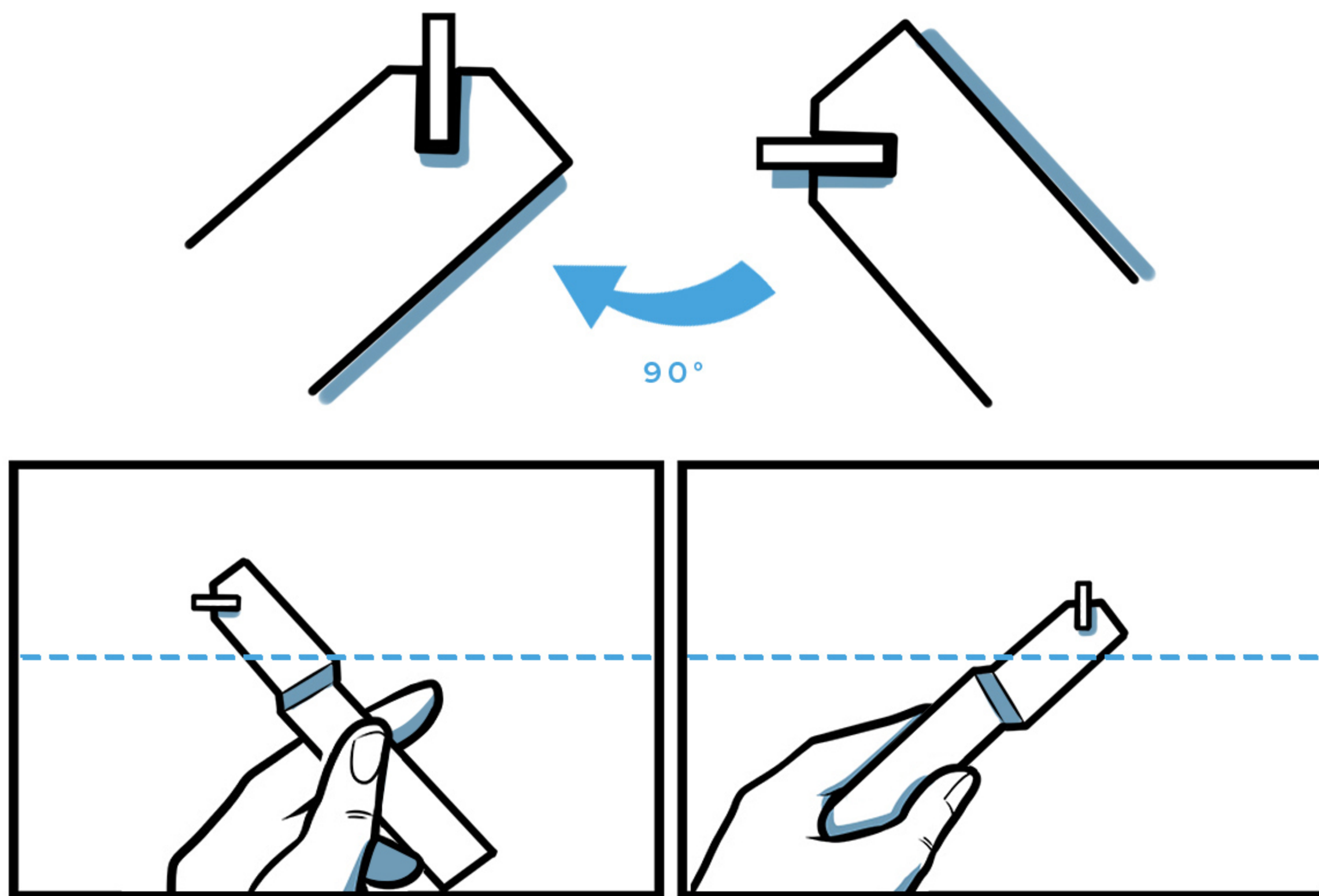
## ***Step 1: Drill the Brackets onto the Wall***

- Drill the first bracket into the wall to set the frame height.
- Drill the second bracket at the same height as the first bracket, spacing it to match the distance between the centers of the metal plates on the back of the frame. Use a measuring tape for accuracy.
- Hang the frame by hooking the metal plates onto the brackets.
- Use a level to check alignment and adjust if needed.

## Step 2. Affix the T-screw onto the Wall

- While the frame is still on the wall, carefully press the bottom edge of the frame against the wall to mark the T-screw location using the impression from the metal plate.
- Remove the frame then drill a hole at the mark and install the T-screw anchor.
- Insert the T-screw into the anchor and tighten with the T-wrench, leaving it horizontal to fit the bottom plate.





### ***Step 3. Mount the Print then Rotate T-Screw 90° Clockwise***

- Practice turning the T-screw with the wrench, then reset it to the starting position.
- Hang the frame on the top brackets and press the bottom onto the horizontal T-screw.
- Slide the wrench behind the frame and turn the T-screw 90° clockwise to lock it in place.
- Gently pull the frame to confirm if it's secure.